



WHITCHURCH GARDENS

EDGWARE, HA8 6PD

£1,020,000
FREEHOLD

Taylor Hawkins is pleased to present this beautiful extended six-bedroom semi-detached house, located on Whitchurch Gardens, a quiet residential road in Edgware.

This spacious family home has been extended to the rear and two-storey side, offering generous living space throughout. On the ground floor, you'll find a large, modern open kitchen with bi-fold patio doors leading out to a large, well-maintained garden. There is also a ground floor bedroom with its own en-suite, along with a separate downstairs bathroom for guests or family use.

Upstairs, the bedrooms are bright and spacious, all featuring built-in wardrobes. The property also offers plenty of storage throughout, making it ideal for families.

Located close to local schools, shops, and both Edgware and Canons Park stations, this home offers excellent convenience and comfort.

Call today to book a viewing.



TAYLOR HAWKINS
Estate Agents
0208 958 2222 / TaylorHawkins.co.uk

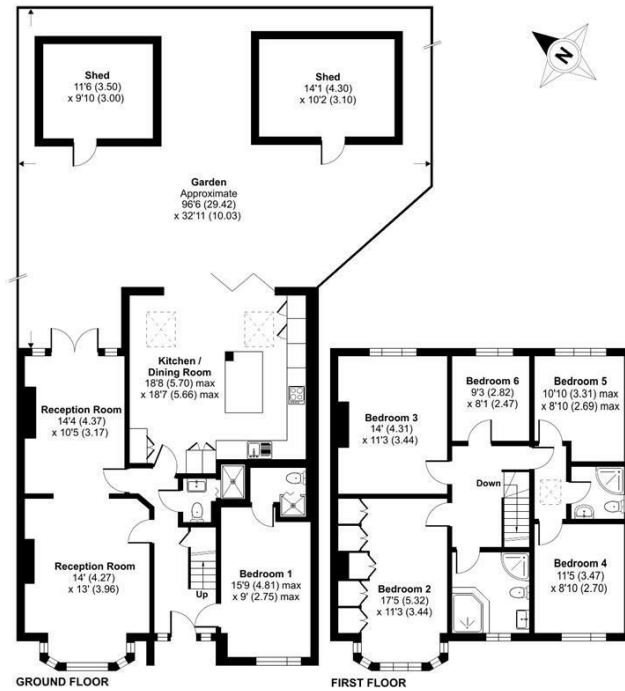
Whitchurch Gardens, Edgware, HA8

Approximate Area = 1895 sq ft / 176 sq m

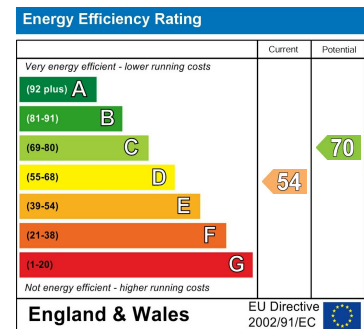
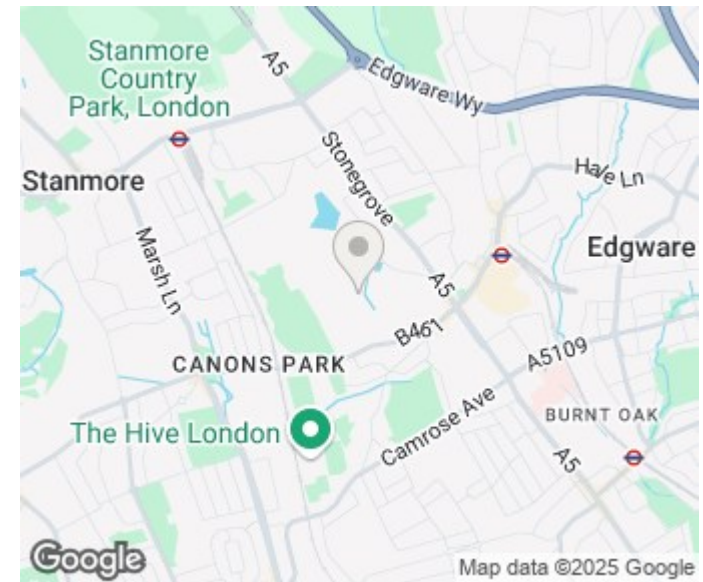
Outbuildings = 256 sq ft / 23.7 sq m

Total = 2151 sq ft / 199.7 sq m

For identification only - Not to scale



Floor plan produced in accordance with RICS Property Measurement 2nd Edition, incorporating International Property Measurement Standards (IPMS2 Residential). © nrdhcom 2025. Produced for Taylor Hawkins. REF: 1283432



Agents Note: Whilst every care has been taken to prepare these particulars, they are for guidance purposes only. All measurements are approximate and are for general guidance purposes only and whilst every care has been taken to ensure their accuracy, they should not be relied upon and potential buyers/tenants are advised to recheck the measurements

Edgware Sales
58 Edgware Way
Edgware
Middlesex
HA8 8DJ

020 8958 2222
property@taylorhawkins.co.uk
<https://taylorhawkins.co.uk/>



TAYLOR HAWKINS
Estate Agents
0208 958 2222 / TaylorHawkins.co.uk